

Commercial Duct Silencers

Kinetics offers the design and engineering assistance to integrate our line of duct silencers into a system solution. As a result you may choose from a selection of standard or custom engineered duct silencers that will satisfy the requirements of each application.

Prime candidates for noise control measures are openings into and out of noisy environments. This includes the ventilation of buildings, enclosures, and equipment rooms. Integration of noise control measures such as silencers and louvers, into the system design requires careful consideration of space constraints, fan selection and aerodynamic pressure losses.

Applications:

- Fan Inlet and Discharge
- Air Handling Units
- Cooling Towers
- Radiators
- HVAC Duct Systems for Commercial, Institutional and industrial Buildings

Types: (Rectangular and Circular)

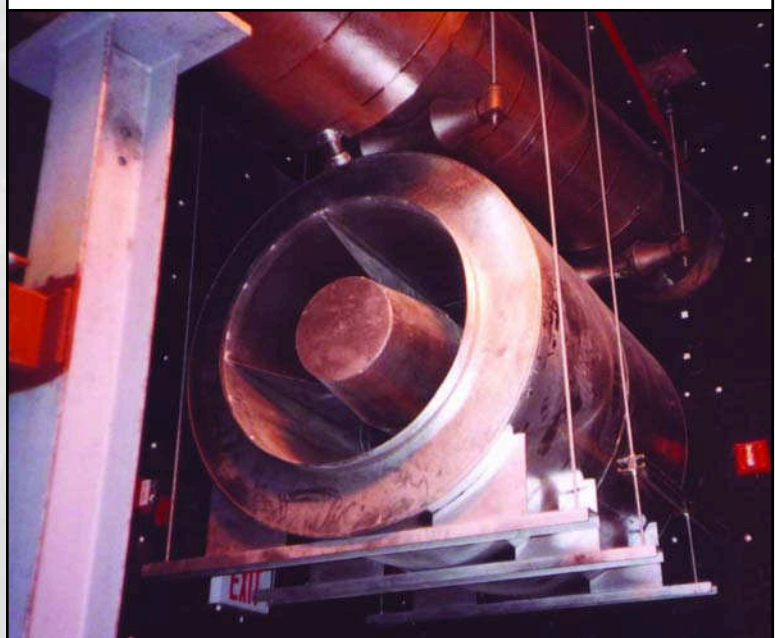
- Elbow Dissipative
- Straight Dissipative
- Reactive (No-Fill), Elbow and Straight
- Cross-Talk
- Custom Designs as Required
- Axial Cone
- Transitional

All Kinetics® silencers are backed by independent testing in a NVLAP accredited laboratory in accordance with ASTM E477-99.

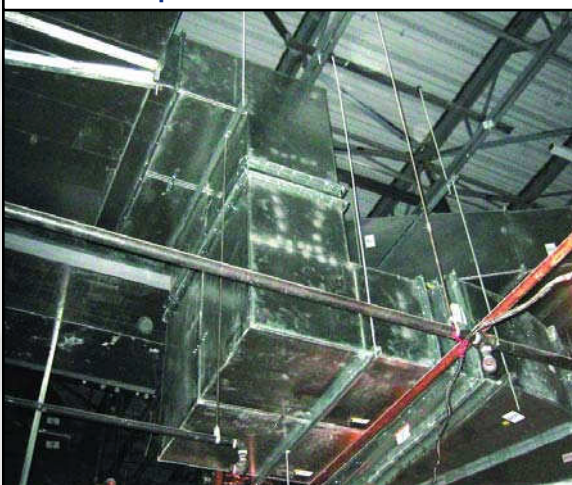
Rectangular Duct Silencers Model VRS/3



Return Air Circular Duct Silencer Model CD-4-B2



Z-Shaped "Offset" Duct Silencer



Rectangular Duct Silencers

